



**Electro
One**

ELECTRICAL CONDUIT

BS4568/BS EN 50086/BS EN 61386 Part 1 Class 3 finish

Finish: Class 3 (Pre - Galvanized)


Feature: The conduit is externally threaded on both ends, one end fitted with coupling and the other end protected by a plastic end cap.

Removable protection end cap is used to prevent thread damage during transportation.

Application: The Conduit will help protect electrical wires and cables from environmental conditions.

Installation Environment: Indoor, dry locations.

Brand: **Electro One**

| CAT # | Size | Outside Dia. | | Wall Thickness | Length | Packing | Pic |
|-------|------|--------------|---------|----------------|--------|----------------------|---|
| | | Min(mm) | Max(mm) | mm | m | pcs/ small bundle | |
| CON20 | 20MM | 19.7 | 20.0 | 1.20 | 3.75 | 10 |  |
| CON25 | 25MM | 24.6 | 25.0 | 1.20 | 3.75 | 10 | |
| CON32 | 32MM | 31.6 | 32.0 | 1.20 | 3.75 | 8 | |
| CON50 | 50MM | 49.6 | 50.0 | 1.50 | 3.75 | 5 | |





**Electro
One**

STRUT CHANNEL

41 X 41 Slotted Unistrut Channel

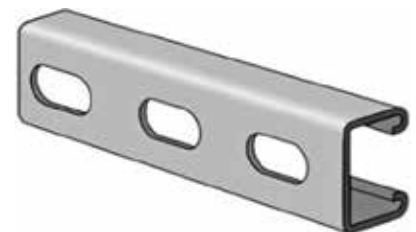
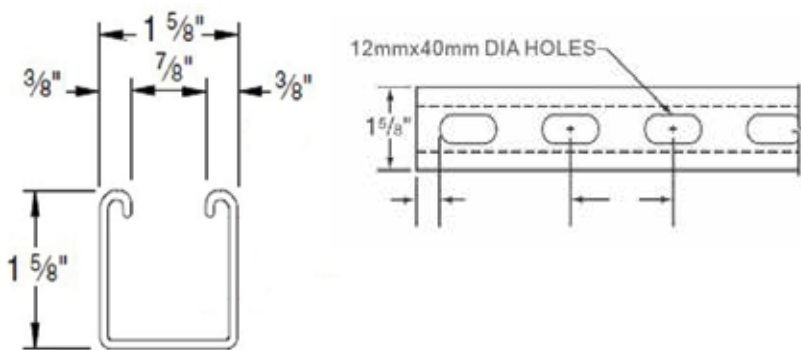
Feature:

- Pre-galvanized
- Dia. Hole: 12mmx40mm

Brand: Electro One

Material:

- Steel



Slotted Type

Slotted Type:

| Dimensions | | Thickness | CAT.# | Length |
|-----------------|---------|-----------|---------------|---------|
| in | mm | mm | | |
| 1-5/8" X 1-5/8" | 41 X 41 | 1.5 | CH-41411530SL | 3.0Mtr. |
| 1-5/8" X 1-5/8" | 41 X 41 | 1.1 | CH-41411129SL | 2.9Mtr. |



**Electro
One**

STRUT CHANNEL

41 X 21 Slotted Unistrut Channel

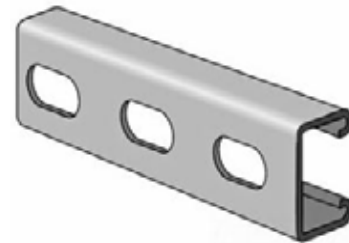
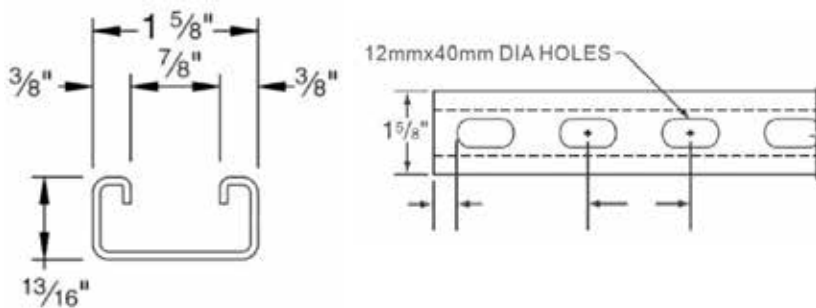
Feature:

- Pre-galvanized
- Dia. Hole: 12mmx40mm

Brand: Electro One

Material:

- Steel



Slotted Type

Slotted Type:

| Dimensions | | Thickness | CAT.# | Length |
|-----------------|---------|-----------|---------------|---------|
| in | mm | mm | | |
| 1-5/8" X 13/16" | 41 X 21 | 1.1 | CH-41211129SL | 2.9Mtr. |



**Electro
One**

ELECTRICAL METALLIC TUBING(EMT)

American National Standard for EMT (ANSI C80.3)

Finish: Pre-galvanized

Brand: **Electro One**

| CAT # | Trade Size | Nominal Outside Dia. | | Nominal Wall Thickness | | Length | Packing | |
|---------|------------|----------------------|-------|------------------------|------|--------|------------------|----------------|
| | in. | in. | mm | in. | mm | m | Pcs/small bundle | Pcs/big bundle |
| EMT-075 | 3/4" | 0.922 | 23.42 | 0.049 | 1.24 | 3.00 | 10 | 250 |

Applicable tolerances:

Length: ± 0.25 "

Outside Diameter: 1/2" -4" ± 0.005 "

Wall thickness tolerance: 1/2" - 3" ± 0.002 " , 4" ± 0.005 "

Note: Other length for choice: 3.05meters

★ Consult Manufacturer for Proper Installation



Application:

---- EMT provides easy bending cutting and joining while resisting flattening, kinking and splitting, creating smooth, continuous raceways for fast wire pulling.

---- Installation Environment: Indoor.

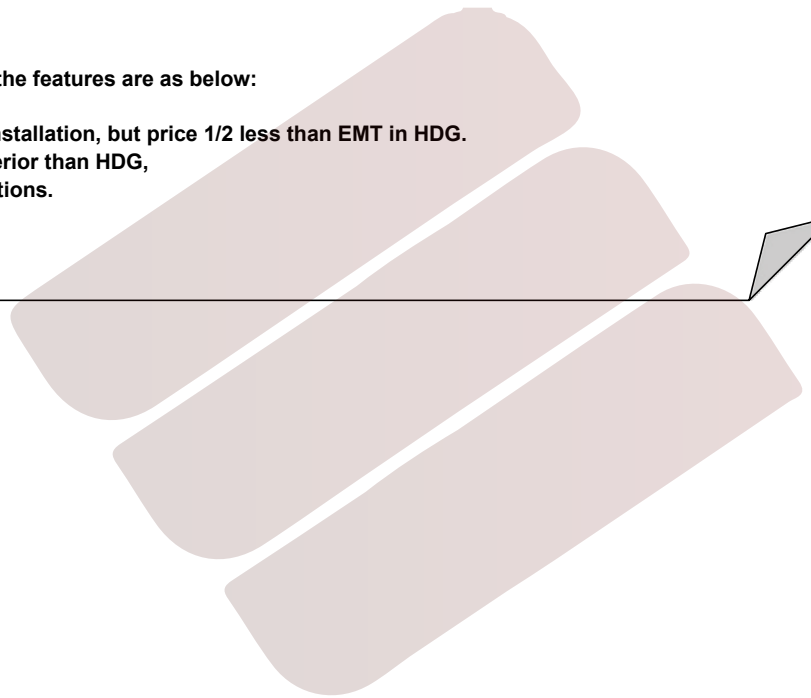
Feature:

1. When compare with IMC & Rigid Conduit, the features are as below:

- Light-weight ductile steel conduit for long life indoor and easy bending.
- Weight 1/3 less than IMC/Rigid Conduit.
- Price 1/3 less than IMC/Rigid Conduit.

2. When compare with Hot dip galvanized EMT Conduit, the features are as below:

- Same function as HDG EMT Conduit under indoor installation, but price 1/2 less than EMT in HDG.
- The Zinc Coating Thickness of Pre-galvanized is inferior than HDG, so HDG is superior in anti-corrosion under wet locations.





شركة الكترو كومس للتجارة
ELECTROCOMS
TRADING CO,